

Special Interest Articles:

- BCP Plan
- Census
- CFR
- E03 –Education Support Staff

Individual Highlights:

CFR	2
E03 - Edu	2
Atomic time	2

Need a Cash flow statement?

Contact Rupert Jones Finance.

Tel: 0203 137 9335

Info@rupertjonesfinance.co.uk

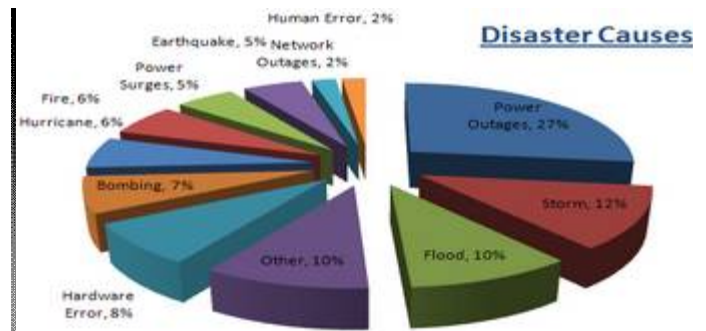
When Disaster Strikes!

What is a business continuity or disaster recovery plan?

A business continuity or disaster recovery plan sets out how the school would cope when a disaster happens.

Why Is It Important?

A disaster may seem highly unlikely but if it did happen the consequences would be very serious. It is therefore essential that all schools have an up to date plan covering the core functions of the school.



Minimum

As a minimum, a plan needs to look at contingency arrangements for ; if the schools premises were not available for an extended period(e.g because of fire or flood); large scale loss

of property (e.g through fire theft); loss of information through catastrophic failure of IT systems; mass unavailability of staff (e.g through a pandemic)

Have you got a plan, it is a requirement for SFVS assessment?

Data Counts



Law

By law schools are required to keep curricular and educational records for each pupil, and to disclose these records to

parents and pupils, report at least once a year to parents on their child's progress.

Data

Pupil data plays an important role in the day to day administration of educational institutions. Data collected in the form of names, ages, background, parents, performance etc is essential to providing feedback and evaluating

pupil's progress throughout their academic life.

Funding

Pupil data is also used by the Education Department to determine education funding requirements for each Local Authority. This year the data will be collected in Autumn much earlier than the regular January of previous years.

CFR Framework



"What type of costs are covered under E03 – Educational Support staff?"

CFR Framework

The Consistent Financial Reporting (CFR) framework provides a standardised financial reporting for all schools to follow and show a national picture on how schools spend their budgets.

Benchmark

The framework breaks down into income, expenditure, revenue and

capital. In effect the CFR serves as a benchmark that facilitates proper running of schools throughout the country.

CFR Returns

Schools maintained by local authorities are required by law to submit a CFR return at the end of every financial year. The CFR guidelines provide detailed information on the composition and how

the return is to be compiled.

Submission

According to the framework, schools can submit their returns in the following ways:-

- Using the DFE collect website
- Using the Schools CFR software if it has been up graded.

E03 – Educational Support Staff

Includes:

- Salaries and wages of support staff employed directly by the school in support of students' learning:
- childcare staff
- classroom assistants / learning support assistants
- examination invigilators and examination officers

-foreign language assistants

-librarians

-nursery assistants

-pianists

-residential childcare officers at a residential special school

-supply education support staff

-workshop and technology technicians

-educational welfare

officers

-cover supervisors

-expenditure on salaries and wages consisting of gross pay including bonus and allowances,

Excludes:

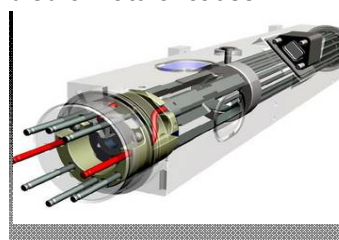
Education support staff not employed directly by the school. Where the cost is incurred as part of a service contract.

Brain teaser – Interesting Facts

Statute in the Park

If a statue in the park of a person on a horse has both front legs in the air, the person died in battle; if the horse has one front leg in the air, the person died as a result of wounds received in battle; if the horse has all four legs on the ground, the person

died of natural cause.



International Atomic Time — kept by ultra precise clocks is gradually

out pacing astronomical time, which is determined by our planet's rotation. (Earth's spin is slowing! what a drag.) So in 1972, the International Earth Rotation and Reference Systems Service began adding occasional leap seconds. They've done it 23 times, most recently adding an extra "one-Mississippi" in Dec 05.

